

and hence effective management and conservation policies may be seriously considered to further reduce the mortality of olive ridley as well as marine mammals. The Forest and Fisheries Department, Government of Orissa and West Bengal may enforce restriction in the fishing activity during *arribada* seasons which will prevent large scale killing of the nesting population. Fishermen may also be advised to haul their fishing gears (especially trawl and gill nets) in frequent intervals during the

nesting season so that the entangled turtles and marine mammals, if any, may be released to increase the chances of their survival. Another possibility is the introduction of 'turtle excluder net', which has been developed in the U.S.A. for shrimp trawling; in this device, the entangled turtles are allowed to escape and the shrimps are retained in the cod end. Attempts can be made off Gahirmatha with similar design trawl nets to ascertain its efficiency in allowing the turtles to escape.

REFERENCES

- BISWAS, S. 1982. A report on the olive ridley *Lepidochelys olivacea* (Eschscholtz) (Testudines: Cheloniidae) of Bay of Bengal. *Rec. Zool. Surv. India*, 79: 275-302.
- BOBB, D. 1982. Massacre at Digha. *India Today*, 31: 64-65.
- BUSTARD, H. R. 1976. Worlds largest sea turtle rookery. *Tiger paper*, 3: 3.
- GANGULY, S. N. 1980. An appeal to save Pacific ridley turtles from mass-killing in West Bengal and Orissa. *Proc. Wildlife Workshop*. Z.S.I., Calcutta. pp. 35-37.
- JAMES, P. S. B. R. AND R. SOUNDARARAJAN 1980. On a sperm whale *Physeter macrocephalus* Linnaeus stranded at Krusadai Island in the Gulf of Mannar with an up-to-date list and diagnostic features of whales stranded along the Indian Coast. *J. mar. biol. Ass. India*, 21 (1 & 2): 17-40.
- KAR, C. S. 1980. The Gahirmatha turtle rookery along the coast of Orissa, India. *IUCN/SSC Marine Turtle Newsletter*, 15: 2-3.
- 1982. The Gahirmatha sea turtle rookery, Orissa. *Makara*, 3 (1): 20-23.
- AND S. BHASKAR 1982. The status of sea turtles in the Eastern Indian Ocean. In: K. Bjorndal (Ed.) *The biology and conservation of sea turtles*. Smithsonian Institute press, Washington, pp. 365-372.
- AND M. C. DASH 1984. Mass nesting beaches of the olive ridley *Lepidochelys olivacea* (Eschscholtz, 1829) in Orissa and the behaviour during an *arribada*. In: E. G. Silas (Ed.) *Proceedings of the Workshop on sea turtle conservation*. CMFRI, Cochin, pp. 36-48.
- PRITCHARD, P., P. BACON, F. BERRY, A. CARR, J. FLETMEYER, R. GALLAGHER, S. HOPKINS, R. LANKFORD, R. MARQUEZ M., L. OGREN, W. PRINGLE JR., H. REICHART AND R. WITHAM 1983. In: K. A. Bjorndal and G. H. Balazs (Ed.) *Manual of sea turtle research and conservation techniques*. Second Edition. Centre for Environmental Education, Washington, D.C. pp. 1-125.
- SILAS, E. G., M. RAJAGOPALAN, A. B. FERNANDO AND S. S. DAN 1983. Marine turtle conservation and management. A survey of the situation in Orissa 1981-82 and 1982-83. *Mar. Fish. Infor. Serv. T & E Ser.*, 50: 13-23.
- , S. S. DAN AND A. B. FERNANDO 1984. Observations on the mass nesting and immediate post mass nesting influxes of the olive ridley *Lepidochelys olivacea* at Gahirmatha, Orissa 1984 season. *Bull. Cent. Mar. Fish. Res. Inst.*, 35: 76-82.
- , ——— AND ——— 1985. On the second mass nesting of the olive ridley *Lepidochelys olivacea* at Gahirmatha, Orissa during 1984. *Proc. Symp. Endang. Mar. Ani. & Mar. Parks*, MBI, pp. 234-241.

TABLE 8. Details of four carcasses of marine mammals in different states of decomposition observed at Gahirmutha, Orissa on 16th January 1987

Measurements (cm)		<i>S. chinensis</i>		<i>N. phocoenoides</i>	
		No. 1	No. 2	No. 1	No. 2
Tip of upper jaw					
.. to deepest part of fluke notch ..		99.85+	201.0	165.0	160.0
.. to top of dorsal ..		—	105.0	—	—
.. to anterior insertion of flipper (rt)		37.5	—	38.0	37.0
.. to centre of eye ..		24.0	—	18.0	18.0
.. to angle of gape ..		20.0	—	14.3	13.0
Rostrum (max. width) ..		—	—	18.5	7.5
Projection of lower jaw beyond upper ..		—	—	2.5	3.0
Length of eye ..		1.7	—	3.2	3.5
Blowhole length ..		—	—	—	—
Blowhole width ..		—	—	—	—
Flipper length tip to anterior insertion		Damaged	Damaged	—	—
Dorsal fin height ..		—	12.3	—	—
Dorsal fin base ..		—	29.1	—	—
Tooth count					
Rt upper ..		30	31	17	—
Rt lower ..		30	—	11+	10
Lt upper ..		31	31	17	10+
Lt lower ..		30	—	13+	—

TABLE 9. Details of three carcasses of marine mammals in different state of decomposition observed at Gahirmutha, Orissa on 7.3.1987 and 8.3.1987

Measurements (cm)		<i>S. chinensis</i>	<i>O. brevirostris</i>	Specimen No. 3
Tip of upper jaw				
.. to deepest part of fluke notch ..		188.0	201.0	142.0
.. to top of dorsal ..		—	121.0	—
.. to anterior insertion of flipper (rt)		52.5	36.0	—
.. to centre of eye ..		33.0	11.5	—
.. to angle of gape ..		29.0	9.0	—
Rostrum (max width) ..		—	—	—
Projection of lower jaw beyond upper ..		2.0	—	—
Length of eye ..		2.9	3.0	—
Blowhole length ..		3.5	4.0	—
Blowhole width ..		1.2	1.0	—
Flipper length (tip to anterior insertion) ..		23.0	21.0	—
Dorsal fin height ..		—	6.0	—
Dorsal fin base ..		—	17.5	—
Fluke span ..		42.0	56.0	—
Notch of fluke to anus (centre) ..		94.0	62.0	—
Girth at anus ..		94.0+	77.0	—
Girth at eye ..		68.0+	64.0	—
Tip of lower jaw to genital opening ..		112.0	109.0	—
Tooth Count				
Rt upper ..		34	13	—
Rt lower ..		32	13	—
Lt upper ..		33	11	—
Lt lower ..		32	12	—

and
vatio
to fu
as w
Fishe
and
fishir
will
popu
haul
gill

Bis
Lepide
niidae
275-30

Bo
31 : 6

Bu
rooke

GA
ridley
Orissa
pp. 3

JAM
On a
strand
with a
strand
India,

KAI
along
Turtle

Orissa

sea to
Bjorne

TABLE 6. Details of two carcasses of *Neophocaena phocaenoides* observed at Gahirmatha Beach, Bhitarkanika Wildlife Sanctuary, Orissa on 4-2-1986

Measurements (cm)	No. 1	No. 2
Tip of upper jaw		
.. to deepest part of fluke notch	180	163
.. to anterior insertion of flipper (rt)	42.5	36
.. to centre of eye	9.5	7.0
Flipper length	33.0	17+
Tooth count		
Rt upper	—	—
Rt lower	—	—
Lt upper	17	10+
Lt lower	15	12+
Condition	..Decomposed	Decomposed

REMARKS

Large scale mortality of nesting females of *L. olivacea* during *arribada* could have an adverse effect on the breeding population and thereby the total stock. The mortality of olive ridley *L. olivacea* and marine mammals in the incidental catch is caused due to entanglement in the fishing gears. Thanks to the stringent measures taken by the Forest officials of Orissa and West Bengal State Governments, the mortality of olive ridley declined from 7500 in 1983 to 392 in 1984. However mortality has not reduced since 1984

TABLE 7. Details of freshly stranded male Humpback dolphin *Sousa chinensis* (30.5 kg) observed at Gahirmatha, Orissa on 16th January 1987

Details	Straightline parallel to the body axis (cm)	Point to point (cm)
Tip of upper jaw to deepest part of fluke notch	127	137
.. to centre of anus	97	99
.. to centre of genital slit	70	78
.. to end of ventral grooves	45	46
.. to top of dorsal fin	78.5	82
.. to anterior insertion of flipper (rt)	38	39
.. to centre of blow hole	22.7	25.5
.. to centre of eye (rt)	23.7	23.8
.. to angle of gape	20.3	24.0
Rostrum (maximum width)	5	8
Projection of lower jaw beyond upper	1	—
Length of eye (rt)	1.6	—
Centre of eye to angle of gape (rt)	4.0	—
Centre of eye to angle of gape (left)	4.2	—
Blowhole length	1.5	—
Blowhole width	2.5	—
Flipper length		
(a) tip to anterior insertion (rt)	22.0	22.2
(b) tip to anterior insertion (lt)	22.5	23.0
Dorsal fin height	11.5	11.5
Dorsal fin base	28.5	28.5
Fluke span	32.0	—
Notch of flukes to centre of anus	42.0	43.0
Notch of flukes to centre of genital aperture	60.0	61.5
Girth at anus	—	46.0
Girth at eye	—	59.0
Tooth count :		
Rt upper	—	33
Rt lower	—	29
Lt upper	—	33
Lt lower	—	28
Genital slit length	12.5	—
Anal slit length	3.5	—
Colour :	Dorsal dark grey, ventral greyish white, caudal dark grey and flipper dark grey.	
Remarks :	Since the specimen was freshly washed ashore, it was cut open and examined. Weight of intestine, lungs, stomach, pancreas, kidney, heart, liver, testis taken.	
Parasites :	Nil.	
	Gut : Empty.	

resented
ars, the
deepest
ged from
of finless
oenoides
ary and
-180 cm
dolphin
e 201 cm
hirmatha
on one
dead S.
l. II A).
ed about
nts were

Total	
13	
1	
4	
1	
19	
<i>nika Wild</i>	
21-3-1985	
Specimen	
No. 1	No. 2
62.0	160.0
—	—
49.0	42.0
30	33
32	31
—	—
—	—

J. MAR. BIOL. ASS. INDIA, 1989, 31 (1 & 2) P. S. B. R. JAMES AND OTHERS, PLATE I

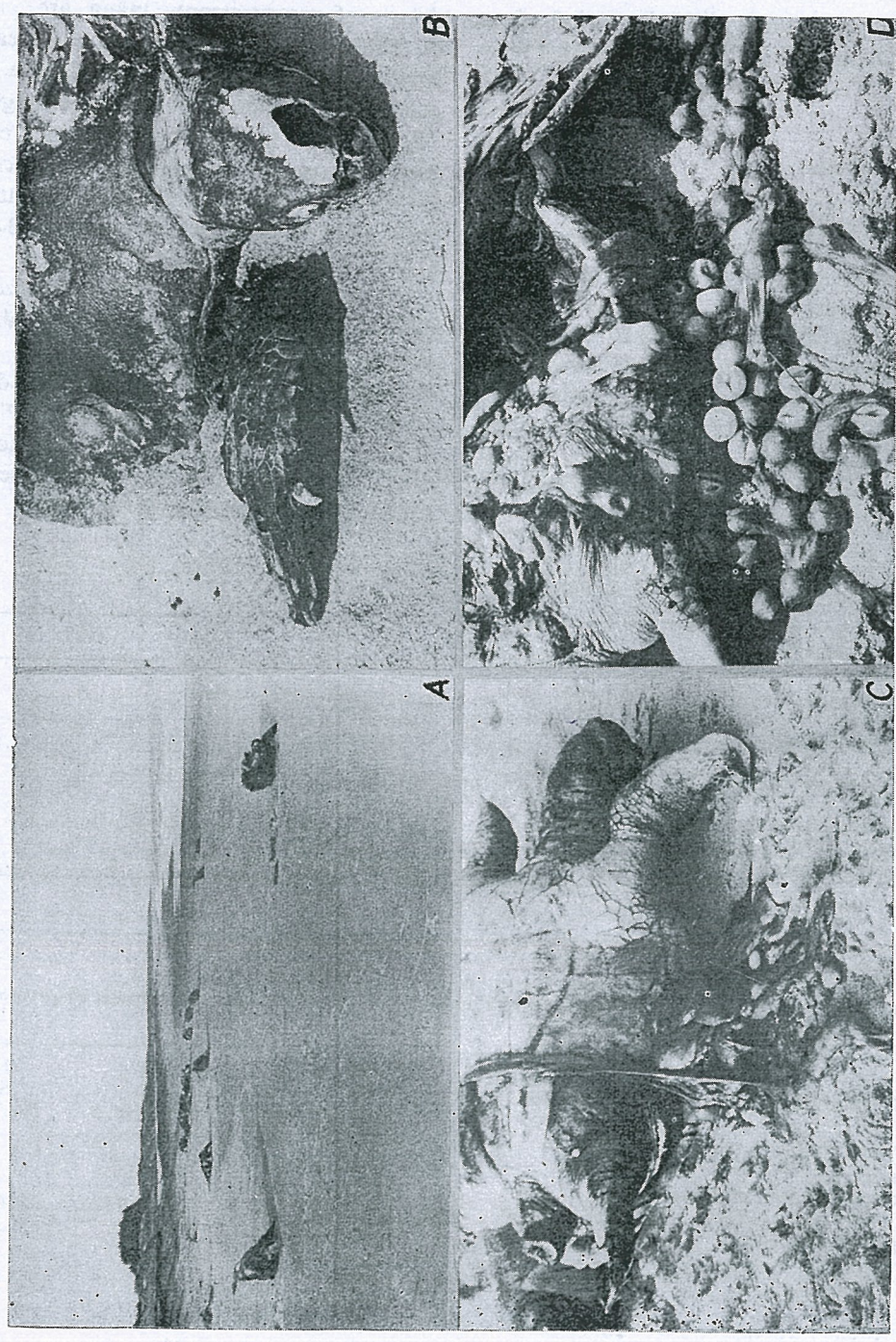


PLATE I A. Carcasses of olive ridley at Gahirmatha seen during 1986; B. Close up view of a carcass and C-D. Carcass of olive ridley with unlaidd eggs.

female, carapce width (SL) it varied from 53.8-67.7 cm (58.20) in 1986 and it varied from 53.5-61.5 (57.15 cm) in 1987.

Marine mammals

Similar to the olive ridley a few marine mammals got entangled in the fishing gears and were hurt by the fishing crafts. The carcasses of these mammals were also washed ashore along with turtles. From 1983 to 1987 a total of 19 dead marine mammals in different states of decay were noticed at Gahirmatha Beach (Table 4). Of the 19 mammals washed ashore, 13 were Humpback dolphin *Sousa chinensis* (Pl. II B) and the carcasses of this species were recorded in all the years except 1987. The

details of measurements taken are presented in Tables 5 to 9. During these years, the length from tip of upper jaw to the deepest part of fluke notch of *S. chinensis* ranged from 113-259 cm. In 1986, two carcasses of finless black porpoise *Neophocaena phocaenoides* (Pl. II C) were recorded during February and they were in the size range of 163-180 cm (Table 6). One carcass of Snubfin dolphin *Orcaella brevirostris* (Pl. II D) of the size 201 cm (Table 9) was recorded from Gahirmatha Beach during March 1987. Only on one occasion (16-1-1987) a freshly dead *S. chinensis* (127 cm) was observed (Pl. II A). It was a male specimen and weighed about 30.5 kg. All the possible measurements were taken and are presented in Table 7.

TABLE 4. Number of marine mammals washed ashore at Gahirmatha, Orissa Coast from 1983 to 1987 during January-March

Species	1983	1984	1985	1986	1987	Total
<i>Sousa chinensis</i> ..	4	3	2	—	4	13
<i>Orcaella brevirostris</i> ..	—	—	—	—	1	1
<i>Neophocaena phocaenoides</i>	—	—	—	2	2	4
Unidentified (Due to decomposed body parts and without jaws) ..	—	—	—	—	1	1
Total ..	4	3	2	2	8	19

TABLE 5. Details of carcasses (decomposed) of *S. chinensis* observed at Gahirmatha Beach, Bhitarkanika Wild life Sanctuary, Orissa

Measurements (cm)	3-3-1983 Specimen			No. 4	11-2-1984 Specimen			21-3-1985 Specimen	
	No. 1	No. 2	No. 3		No. 1	No. 2	No. 3	No. 1	No. 2
Tip of upperjaw to deepest part of fluke notch ..	259.0	243.0	230.0	170.0	220.0	120.0	113.0	162.0	160.0
„ to top of dorsal ..	105.0	76.8	—	80.0	—	—	—	—	—
„ to anterior insertion of flipper (rt) ..	55.0	32.0	—	51.0	54.0	—	—	49.0	42.0
Tooth count Rt upper ..	22	—	31	32	32	28	32	30	33
Rt lower ..	19	—	32	25	32	27	30	32	31
Lt upper ..	27	—	—	—	—	—	—	—	—
Lt lower	23	—	—	—	—	—	—	—	—

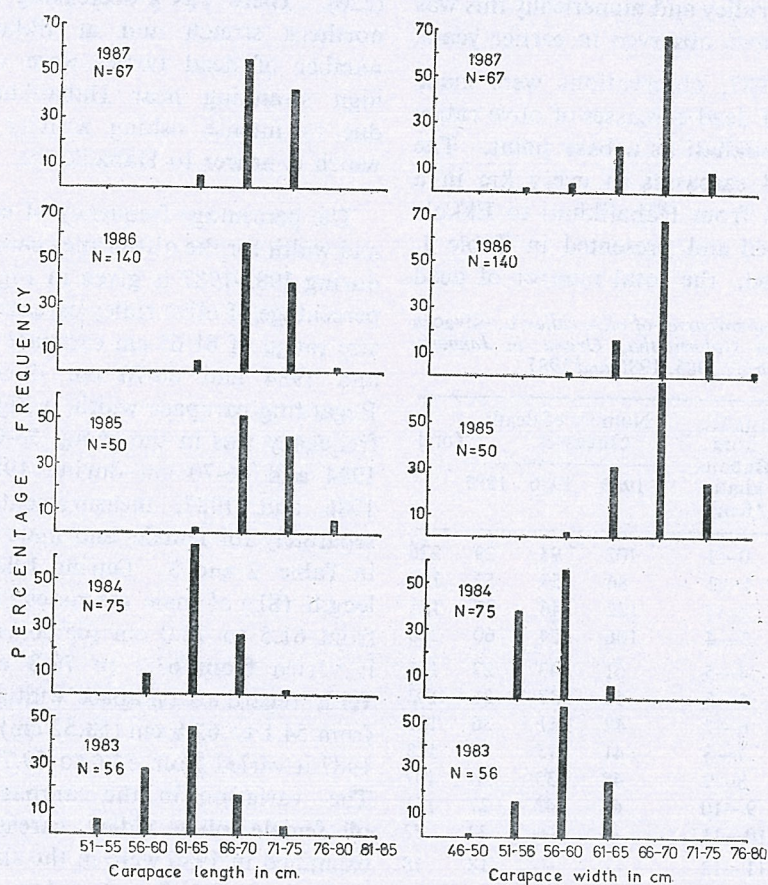


FIG. 1. Percentage frequency of carapace length and width (cm) for adult olive ridley carcasses observed at Gahirmatha, Orissa during 1983-1987.

TABLE 3. Variation in the size (cm) of male olive ridley *L. olivacea* carcasses at Gahirmatha examined during 1986 and 1987 season

Year	Parameter	Carapace		Carapace		Plastron	
		length	width	length	width	length	width
		(Straight line)		(Curved)		(Straight line)	
1986	Range	61.5—72.0	54.1—62.8	65.0—78.5	64.5—76.0	47.0—53.0	46.1—52.0
	Mean	65.56	58.52	70.04	67.28	49.90	50.00
	Carcasses examined	25	25	25	25	20	20
1987	Range	63.3—70.3	54.6—59.7	68.0—74.0	64.0—73.0	42.5—51.5	47.5—52.5
	Mean	66.31	57.41	70.79	67.70	48.85	50.41
	Carcasses examined	17	17	17	17	17	17

team to collect data on marine turtles and mammals at Gahirmatha Beach.

OBSERVATIONS

Olive ridley

The Central Marine Fisheries Research Institute's sea turtle research project team visited the Bhitarkanika wildlife sanctuary and specifically Gahirmatha Beach from Habalikhati to Ekkula Nasi to study the nesting beach conditions during January-April every year for a period of five years (1983-1987). During these visits, observations were made on the mass nesting of the olive ridley *L. olivacea*. In addition, to this, data on carapace length and width, plastron length and width and sex of dead olive ridley were collected. For measuring length and width, standard method suggested by Pritchard *et al.* (1983) has been followed. Biological information on the carcasses of mammals washed ashore at Gahirmatha Beach was collected as suggested by James and Soundararajan (1980).

The mortality and stranding of adult *L. olivacea* were caused due to entangling in fishing gears operated from mechanised vessels from Paradip, Dhamra, Talchua and Chandipur fishing harbours and from non-mechanised fishing crafts. In the first week of March 1983, thousands of dead turtles strewn along the stretch of 15 km at Gahirmatha, a true 'grave yard' for turtles, were noticed. The number of dead olive ridley lying on the beach varied from 55 to 150 per hundred metre stretch with an average of about 59 turtles in hundred metre stretch. A rough estimate revealed that 7000 to 7500 olive ridley carcasses along the stretch of 15 km beach were washed ashore. The dead turtles were in different state of decay and their curved carapace length varied from 51-72 cm (62.2 cm) and the curved carapace width varied from 48-63 cm (57.8 cm). In turtles which were freshly washed ashore, deep injuries on head, plastron and carapace

were noticed. These injuries were caused by fishermen as the turtle got entangled in their gears. The fishermen in an act to safely recover the net from the entangled turtle, injured the animal.

In 1984, the first mass nesting of olive ridley commenced at Gahirmatha on 25th January and extended upto 6th February. During this 13 days period, about 3 lakhs turtles nested in a stretch of 5 km in the northern sector from Ekkula to Ekkula Nasi. The second *arribada* during 1984 season commenced 60 days after first mass nesting and during the period of 7 days about 2 lakhs turtles emerged for nesting. The number of carcasses of olive ridley washed ashore during 1984 season was 392, of which 24% were identified as males. The sharp decline in the number of carcasses from 7500 in 1983 to 392 in 1984 is due to the stern action taken by the officials of the Forest Department, Government of West Bengal and Orissa in preventing the organised fishing for turtles.

The mass nesting in 1985 was protracted over 16 days from 13-1-1985 to 28-1-1985 with the peak nesting occurring between 16th and 19th January. About 2,87,000 olive ridley nested at Gahirmatha Beach during this period 1985 season, we have observed 694 olive ridley carcasses in different state of decomposition. During 1986, the *arribada* at Gahirmatha occurred from 1st to 10th March and around 48,000 olive ridley emerged for nesting (courtesy : Forest Dept., Govt. of Orissa).

During February 1986, 531 dead turtles were noticed at Gahirmatha (Pl. I A, B). Few of the freshly washed ashore female turtles were cut open and found that the turtles were with fully developed unlaidd eggs (Pl. I C, D). During 1987, about 2 lakhs turtles nested from 5th to 14th January in a stretch of 5.7 km in the first mass nesting and again from 6th to 14th March 1987, around 4.02 lakhs olive ridley nested in the second mass nesting in a

ON THE MORTALITY AND STRANDING OF MARINE MAMMALS AND
TURTLES AT GAHIRMATHA, ORISSA FROM 1983 TO 1987*

P. S. B. R. JAMES, M. RAJAGOPALAN, S. S. DAN, A. BASTIAN FERNANDO AND V. SELVARAJ
Central Marine Fisheries Research Institute, Cochin-682 031

ABSTRACT

Observations on the stranded marine turtles and mammals in a stretch of 10 km at Gahirmatha Beach, Orissa during 1983 to 1987 are reported here. The washed ashore marine turtles were due to the result of turtles getting entangled and drowned in fishing operations conducted off Paradip and adjacent area, the carcasses drifting northwards and ashore at Gahirmatha. In 1983 around 7500 olive ridley *Lepidochelys olivacea* were washed ashore and the curved carapace length in cm varied from 51-72 (62.2) and the carapace width in cm varied from 48-63 (57.8). The number of stranded turtles was reduced to 360 in 1987 and this is due to the effective steps taken to enforce the Wildlife (Protection) Act by the State Forest Departments. Strandings of Humpback dolphin *Sousa chinensis*, Snubfin dolphin *Orcaella brevirostris* and Finless black porpoise *Neophocaena phocaenoides* were also recorded. Mortality of nesting females during *arribada* could have an adverse effect on the breeding population of olive ridley visiting the rookery and consequently on recruitment. A careful study is needed to take preventive and precautionary regulatory measures to be adopted in specific type of fishing operations during the nesting season of olive ridley.

INTRODUCTION

FIVE species of sea turtles are known from the Indian seas and all are at present protected by Schedule I of the Indian Wildlife (Protection) Act, 1972. The Convention of International Trade in Endangered species of Wild Fauna and Flora (CITES) which prohibits trade in turtle products places these species in Appendix I of the convention. The mass emergence or *arribada* of the olive ridley *Lepidochelys olivacea* (Eschscholtz) along the north Orissa Coast, more specifically along the 15 km Gahirmatha Beach has been reported by Bustard (1976), Kar (1980, 1982), Biswas (1982), Kar and Bhaskar (1982), Kar and Dash (1984) and Silas *et al.* (1983, 1984, 1985). The illegal capture and transport of live olive ridley from the nesting beaches of Orissa and

West Bengal to Calcutta and other markets have been reported by Bobb (1982) and Ganguly (1980). Incidental catch in fishing gear also accounts for the death of several hundred turtles during their nesting season at Gahirmatha and have been reported by Kar (1980) and Silas *et al.* (1983). Contrary to extensive information available on turtle nesting and conservation, information on the marine mammals along the Indian Coast is restricted to their distribution, strandings and taxonomy. The present paper reports on the mortality and stranding of marine turtles and mammals in a stretch of 10 km at Gahirmatha Beach, in Cuttack District, Orissa during *arribadas* during 1983-1987.

We are thankful to the Additional Chief Conservator of Forest (Wildlife), Bhubaneswar, Orissa and the Divisional Forest Officer, Bhitarkanika Wildlife Division, Chandbali, Orissa for granting permission to CMFRI

* Presented at the 'Symposium on Tropical Marine Living Resources' held by the Marine Biological Association of India at Cochin from January 12-16, 1988.

ON THE MORTALITY AND STRANDING OF MARINE MAMMALS AND
TURTLES AT GAHIRMATHA, ORISSA FROM 1983 TO 1987

CENTRE FOR HERPETOLOGY
MADRAS CROCODILE BANK
POST BAG No. 4
MAMALLAPURAM - 603 104
TAMILNADU, S. INDIA