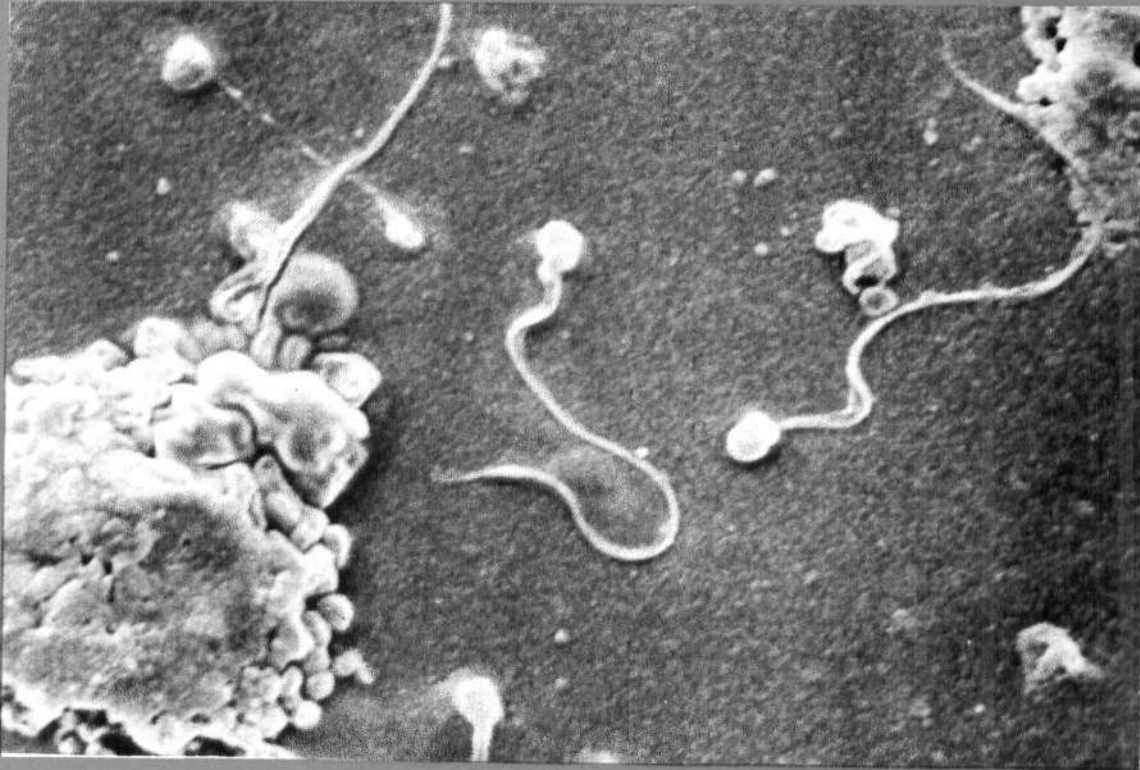




# समुद्री मात्स्यकी सूचना सेवा MARINE FISHERIES INFORMATION SERVICE

No. 118

OCTOBER, NOVEMBER, DECEMBER 1992



तकनीकी एवं विस्तार अंकावली TECHNICAL AND EXTENSION SERIES

केन्द्रीय समुद्री मात्स्यकी अनुसंधान संस्थान कोचिन, भारत CENTRAL MARINE FISHERIES RESEARCH INSTITUTE COCHIN, INDIA

भारतीय कृषि अनुसंधान परिषद  
INDIAN COUNCIL OF AGRICULTURAL RESEARCH

**ON A MARINE TURTLE *LEPIDOCHELYS OLIVACEA* LANDED AT  
BASSEIN KOLLIWADA IN MAHARASHTRA\***

A dead male turtle of the species *Leptochelys olivacea* measuring a carapace length of 68.58 cm and width of 55.88 cm was landed at the Bassein Kolliwada near Bombay on 3.5.1991.

On enquiry it was learned that altogether three turtles were caught in a 'dol' net of which the two live ones were released into the sea. The turtle weighed 34.8 kg.



Fig. 1. Dorsal view of the turtle.



Fig. 2. Ventral view of the turtle.

---

\* Reported by Jayadev S. Hotagi, Research Centre of CMFRI, Bombay - 400 023.